

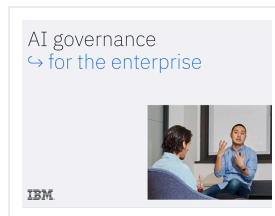
# watsonx.governance

Accelerate responsible and transparent AI workflows



IBM® watsonx.governance™ toolkit for AI governance allows you to direct, manage, and monitor your organization's AI efforts. IBM watsonx.governance employs software automation to strengthen your ability to mitigate risks, manage regulatory requirements, and address ethical concerns for both generative AI and machine learning (ML) models.

Read the IBM AI governance e-book to understand the current challenges clients are facing when adopting responsible AI and how they are using automated technologies to safely govern both machine learning (ML) and Generative AI models. Experience how to create an ideal solution using building blocks to accelerate responsible, transparent, and explainable AI workflows.



## Need more information?

Fill out this form and we will be in touch

First Name\*

Last Name\*

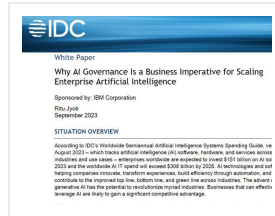
Email Address\*

Phone Number\*

Company\*

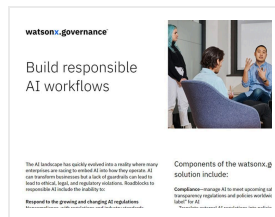
Submit

According to IDC, enterprises worldwide are expected to invest \$151 billion on AI solutions in 2023 and the worldwide AI IT spend will exceed \$308 billion by 2026. Despite this rapid growth, there are barriers to adoption. Read the IDC white paper to learn more about new challenges in responsibly scaling responsible AI for both machine (ML) learning and Generative AI (Gen AI) models.



[Read the white paper →](#)

Read the IBM watsonx.governance overview to learn how this solution can help you govern and build trust in your generative AI. IBM watsonx.governance provides automated governance for both machine learning (ML) and Generative AI (Gen AI) on one integrated platform. Discover how IBM is addressing three key pillars of governance: regulations, risk, and lifecycle governance.



[Download the flyer →](#)



Assure Infologic  
3820 Bluejay Ln. Naperville,  
Illinois 60564  
sales@assuremediagroup.com  
Phone: 630-755-1334  
www.assuremediagroup.com

---

Copyright © 2024 - All rights reserved

---

IBM, the IBM logo, ibm.com, and the IBM Business Partner Emblem are trademarks or registered trademarks of International Business Machines Corporation in the United States, other countries, or both. A current list of IBM trademarks is available on the Web at "Copyright and trademark information" at [www.ibm.com/legal/copytrade.html](http://www.ibm.com/legal/copytrade.html). Other company, product and service names may be trademarks or service marks of others. The IBM product and/or services described herein are provided by an IBM Business Partner who is an independent reseller/dealer. The fulfillment of any conditions or offers described herein are the sole responsibility of the IBM Business Partner. IBM is not responsible for the actions or performance of IBM Business Partners. IBM Business Partner special offers, products and prices may be withdrawn or modified at any time without prior notice.