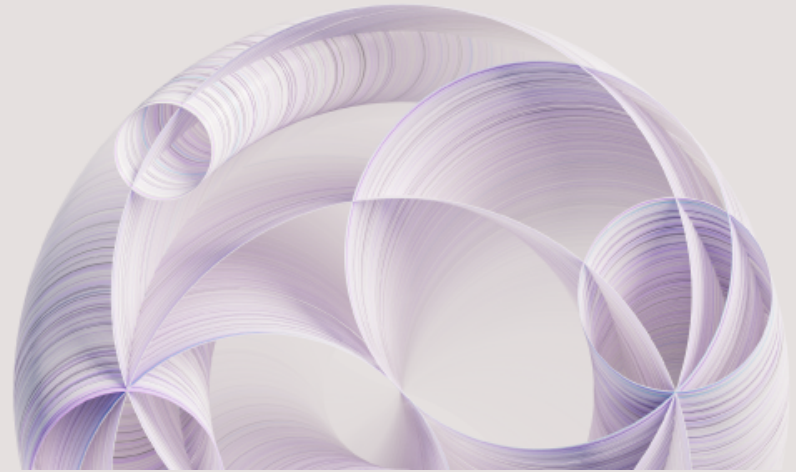


# Scale AI For All Your Data, Anywhere

IBM watsonx.data, the only open,  
hybrid, and governed data  
lakehouse



Foundational models are unlocking new opportunities for businesses to automate processes and unlock new insights. Leaders are re-thinking ineffective and monolithic data architectures in order to scale responsible, transparent and explainable AI.

IBM watsonx.data is the solution that can help data-driven organizations scale governed analytics and AI workloads, leveraging all your data everywhere.

AI starts with your data and how it is stored, managed, and governed in order to be trusted and scalable. Watsonx.data, built on a data lakehouse architecture, can help you significantly reduce the cost of your data warehouse by up to 50%, while simplifying access to governed data for AI.



## Need more information?

Fill out this form and we  
will be in touch

First  
Name\*

Last Name\*

Email  
Address\*

Phone  
Number\*

Company\*

[Read more in the ebook](#) →

\*Required Fields

Submit

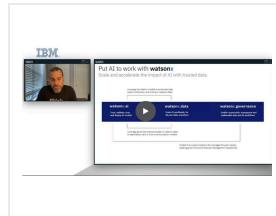
IBM watsonx.data is the next evolution of data lakehouses and is the industry's only open, hybrid, and governed data store that enables you to leverage multiple query engines to run analytics and AI workloads – wherever they reside!



[Click here](#) to view the Assure Infologic privacy policy.

[Download the IBM solution brief](#) →  
[to learn more](#)

When storing and making use of data for analytics and AI, most enterprises have multiple data warehouses and data lakes, on-prem and in the cloud. Learn how watsonx.data allows you to reduce time to trusted insights with built-in governance, access controls, and security.



[Watch the IBM webinar](#) →



Assure Infologic  
3820 Bluejay Ln. Naperville,  
Illinois 60564  
sales@assuremediagroup.com  
Phone: 630-755-1334  
www.assuremediagroup.com

IBM, the IBM logo, ibm.com, and the IBM Business Partner Emblem are trademarks or registered trademarks of International Business Machines Corporation in the United States, other countries, or both. A current list of IBM trademarks is available on the Web at "Copyright and trademark information" at [www.ibm.com/legal/copytrade.html](http://www.ibm.com/legal/copytrade.html). Other company, product and service names may be trademarks or service marks of others. The IBM product and/or services described herein are provided by an IBM Business Partner who is an independent reseller/dealer. The fulfillment of any conditions or offers described herein are the sole responsibility of the IBM Business Partner. IBM is not responsible for the actions or performance of IBM Business Partners. IBM Business Partner special offers, products and prices may be withdrawn or modified at any time without prior notice.